

**KEF**  
INNOVATORS IN SOUND



Q Series

For decades audiophiles around the world have revered KEF (Kent Engineering and Foundry) for its innovative, high-performance loudspeakers. The company was founded in 1961 by Raymond Cooke OBE (1925-1995), a former BBC electrical engineer, widely acknowledged in the audio industry as a leading authority in transducer technology.

# an unrivalled pedigree

The pioneering inventiveness of KEF loudspeakers was undeniable. During the 1960s and early 1970s, KEF's reputation was further enhanced by its outstanding performance. From the mid 1960s, KEF collaborated with the BBC in developing new materials for high-end loudspeakers - the results being embodied in the classic LS3/5a monitor which generated worldwide sales of more than 100,000 systems.

KEF's Uni-Q® technology was introduced in 1988 and since then KEF has maintained its position at the forefront of loudspeaker and home theatre systems.

The core values of KEF: innovation, quality and performance have ensured that KEF has one of the best international reputations for audio excellence.





The multiple award-winning Q Series has always exemplified KEF's conviction that new materials and technologies can, when applied with intelligence and imagination, reproduce recordings so perfectly that they sound indistinguishable from the live event. This is more true now than ever before. As the latest expression of this design philosophy, the new range immerses you in three-dimensional imagery of a richness and clarity that until now has been the exclusive preserve of speakers costing many times more.

## a class above

The all new Q Series from KEF represents a quantum leap in terms of listening pleasure.

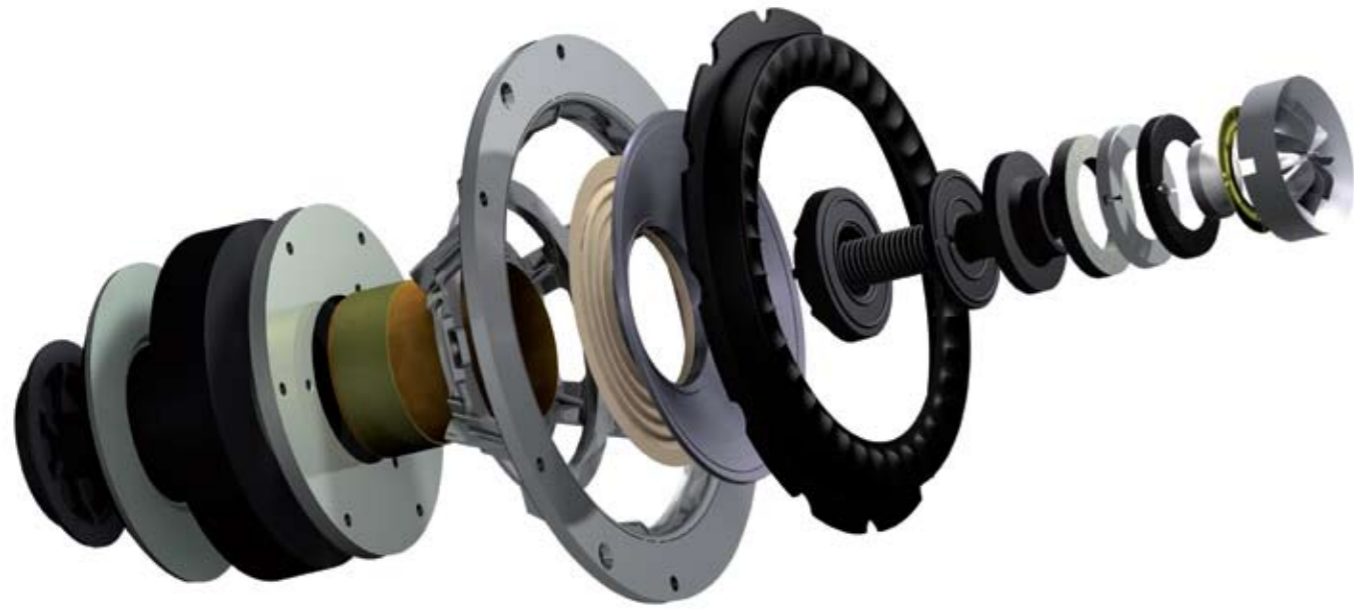
At its heart is a brand new Uni-Q driver array. Derived from the Concept Blade project, with a new, larger, high performance vented tweeter mounted at the acoustic centre of a new metal cone LF/MF driver, it combines lavishly extended bandwidth with effortless dynamics,

imperceptible distortion and outstanding acoustic clarity.

These are speakers with the power to strike a chord in your heart. Off-axis dispersion is unrivalled, so everyone in the room enjoys the same exceptionally realistic sonic imaging, wherever they sit. And with 30% larger capacity cabinets for even gutsier bass and minimalist crossovers assuring deliciously fluid transitions, new Q is both more eloquent and

more emotive than its illustrious predecessor.

Movies or music, Mahler or Massive Attack, what you experience is the captivatingly sweet, accurate and natural live sound of the original performance.



## All new Uni-Q array.

Sweet, spacious and true, wherever you sit.

Thanks to the latest computer modelling techniques, years of painstaking development and a dash of design genius, the new iteration of the Uni-Q concept packs a formidable complement of design innovations. Based on the state-of-the-art HF driver developed for

Concept Blade, the new Q boasts a much larger (25mm/1 in. dome) tweeter for increased sensitivity and distortion-free power handling. It plays as loud as it plays true.

The brilliantly innovative engineering of the new Q Series surrounds you with a spacious sonic image of astonishing purity.

# technology with soul

A groundbreaking new Uni-Q array that conjures up a fluent, spacious and incredibly realistic 3D sound stage you can enjoy wherever you sit. A spectacular new high performance LF driver that delivers deeper, cleaner and more accurate bass.

And a 'total design' approach, with obsessive attention to detail and the pleasures of ownership. These are the qualities that set the new Q Series apart.



The vented tweeter design allows upper registers to be reproduced with startling clarity and smoothes the transition to midrange frequencies. The dome assembly is cleverly braced, pushing the first breakup beyond the audible range so that the sound you hear is flawlessly accurate. And to make sure everyone in the room enjoys the benefit, KEF's distinctive 'tangerine' waveguide over the dome maximises Uni-Q's exceptionally wide dispersion characteristics.



At lower frequencies, the superlight new aluminium cone of the LF/MF drive unit delivers noticeably faster, cleaner response. This is enhanced by KEF's unique Z-flex surround, which allows the extreme excursions needed to deliver a truly visceral thump while also maintaining a seamlessly smooth surface to disperse the high frequencies from the tweeter.

The ensemble is a masterpiece of modern acoustic engineering. Vocals



suddenly seem much more immediate – more open and natural. Surrounded by sound of such clarity, you start hearing things you never did before. Nuances in the way an instrument's played. The sound of a distant cricket in an outside scene. A breath, even.

And best of all, you don't have to be in a little 'sweet spot' to experience it. With KEF Uni-Q, you can sit where you want and not miss a thing. All you hear is what the artist intended.





## Advanced bass technologies.

Deeper, tighter and more accurate bass.

Featuring rigid new aluminium cone technology just like the Uni-Q array, the new Q Series advanced bass driver is a tour de force in its own right. A die-cast aluminium chassis rigidly locates the high efficiency vented magnet assembly to prevent unwanted resonance, and the large (50mm) voice coil ensures impressive power handling. Its musicality is impeccable: seductively tuneful and well controlled, and on the floorstanding models, complemented by dedicated front-firing auxiliary bass radiators (ABRs).

Deep, fast and powerful, this outstanding bass response is enhanced by new enclosures with massive internal bracing to eliminate resonance – and importantly, over 30% more volume than their predecessors. For movie effects, this noticeably enhances the realism of the sound when combined with the newly assertive midrange.



## Total system design.

A holistic approach with no compromises.

The performance envelope of these sensational new drive units is so generous that the signal needs minimal intermediation – simple first order crossovers are all that's required, as you can tell from the transparency of the sound and the inaudibly fluent transitions.



You can see KEF's legendary attention to detail everywhere. Gold plated bi-wire terminals for the clearest possible signal transmission, for example. Or the spikes on the floorstanders – they're adjustable from the top instead of the bottom to make levelling easier. Thoughtful touches.

As you might expect from a company of perfectionists, we see more to the ownership experience than simply

luxuriating in the best possible sound. We think about the environment too. When you unpack your new Q speakers, you'll find that the packaging that protects them is ecologically sound. Because the crossover circuit boards are smaller, the materials impact is reduced.

And when you admire their sumptuous finish – in Black Oak, English Cherry or European Walnut –

you can do so in the knowledge that what looks like a fine exotic hardwood veneer is in fact recycled wood fibre.

This total design approach is another aspect of the difference with KEF. It's all about weaving truly great sound into the fabric of the lives we live now.





Floorstanders.

# towering performers

There are three full-size new Q floorstanders to choose from, each sharing the same audiophile-grade technology in the same basic configuration: a new generation Uni-Q MF/HF array paired with a long-throw bass driver of equal size, and two matching ABRs.

The difference is the size of the drivers: 130mm (5.25in.) diameter in the Q500, 165mm (6.5in.) in the

intermediate Q700 and a class-beating 200mm (8in.) in the flagship of the range, the magisterial Q900.

As front speakers in a home theatre system, these effortlessly assertive performers are capable of flooding the room with an intricate and intensely physical soundstage.

As a viewer, you notice the striking clarity of the vocals and fluidly

articulate midrange response. With massive bass extension heightening the drama and flawless 3-D imaging that faithfully tracks the action on screen, the illusion of being there is phenomenal.

All you have to do is decide which model is best for you, bearing in mind the size of the space and your personal listening preferences.





Bookshelf models.

# compact versatility

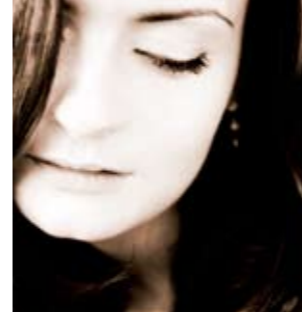
Whether as main speakers, music speakers for your study or family room, rear speakers in a home theatre system or general purpose speakers for multi-room set-ups, the two new Q bookshelf models open up a world of audiophile quality sound at a surprisingly affordable price.

The sound they make is even more surprising: lush, spacious and precisely defined, with compelling midrange/HF response and solid, immaculately controlled bass. The two models – Q100, with a 130mm (5.25in.) Uni-Q array and Q300 with the 165mm (6.5in.) variant – deliver all the benefits of the Uni-Q 'point source' configuration in its latest and most refined form: a more accurate sound image dispersed more evenly throughout the room than is possible with any conventional speaker.

Subjectively, it makes a huge difference. Because everyone in the room is enveloped in the same beautifully integrated three-dimensional sound image, viewing becomes more of a shared experience – and you no longer have to stay in the same spot to get the full enjoyment from your favourite tracks.







Centre and dipole rear effects speakers and the powered subwoofer.

# home theatre redefined

Reproducing most of the soundtrack narrative, the centre speaker is by far the most important in any home theatre surround sound system, and the Q200c and Q600c are engineered accordingly.

With a new generation 130mm (5.25in.) and 165mm (6.5in.) Uni-Q driver array respectively, flanked by a low distortion bass unit and an ABR of the same size, they combine raw power with the subtlety to convey moments of great delicacy.

What you notice is how convincingly the larger new metal dome tweeter captures the emotional range of the human voice – mood and character shine through with real clarity.

Your involvement in the action is noticeably enhanced by the addition of the Q800ds dipole to convey the left and right rear channels. With the two 130mm (5.25in.) Uni-Q arrays on each speaker playing out of phase, ambient 3D effects are completely diffused throughout the listening area to create an uncanny illusion of actually being there, whether that's

deep in the rainforest, in a concert arena or driving along a gritty urban back street.

The final ingredient of your new Q system is of course the seductive Q400b subwoofer. A closed box design housing a 250mm (10in.) woofer driven by a 200W on-board Class-D amplifier, this discreet cube creates spectacular bass imagery – eloquent, musical and addictively physical. Anchoring the whole sound performance in an all-embracing sensation of immediacy, it completes the acoustic picture.





Q900 7.1 Package.



Q300 5.1 Package.



Q500 5.1 Package.



Q700 7.1 Package.



Q100 5.1 Package.

# the perfect system for your space

You want your home entertainment audio system to get the best out of high definition TV, 3D technologies and other new broadcasting and replay formats – and with a range

that includes three full-size floorstanding models, two versatile bookshelf speakers, a dipole rear effects speaker and a magnificent powered sub, you can configure a

Q Series 5.1 or 7.1 system that exactly suits your budget, room size and personal preferences.



# specifications



Model	Q900	Q700	Q500	Q300
Design	Two and a half-way bass reflex	Two and a half-way bass reflex	Two and a half-way bass reflex	Two-way bass reflex
Drive units	200mm (8in.) aluminium Uni-Q 38mm (1.5in.) vented aluminium dome HF 200mm (8in.) aluminium LF 2 x 200mm (8in.) aluminium ABR	165mm (6.5in.) aluminium Uni-Q 25mm (1in.) vented aluminium dome HF 165mm (6.5in.) aluminium LF 2 x 165mm (6.5in.) aluminium ABR	130mm (5.25in.) aluminium Uni-Q 25mm (1in.) vented aluminium dome HF 130mm (5.25in.) aluminium LF 2 x 130mm (5.25in.) aluminium ABR	165mm (6.5in.) aluminium Uni-Q 25mm (1in.) vented aluminium dome HF
Frequency response (±3dB)	32Hz - 40kHz	36Hz - 40kHz	40Hz - 40kHz	42Hz - 40kHz
Crossover frequency	1.8kHz	2.5kHz	2.5kHz	2.5kHz
Amplifier	N/A	N/A	N/A	N/A
Amplifier requirements	15 - 200W	15 - 150W	15 - 130W	15 - 120W
Sensitivity (2.83V/1m)	91dB	89dB	87dB	87dB
Maximum output (SPL)	114dB	112dB	110dB	110dB
Impedance	8Ω	8Ω	8Ω	8Ω
Low pass filter variable	N/A	N/A	N/A	N/A
Low level signal inputs	N/A	N/A	N/A	N/A
Internal volume	N/A	N/A	N/A	N/A
Power requirements	N/A	N/A	N/A	N/A
Power consumption	N/A	N/A	N/A	N/A
Weight	22.1kg (48.7lbs)	17.2kg (37.9lbs)	15kg (33.1lbs)	7.7kg (17.0lbs)
Dimensions (H x W x D)	1060 x 244 x 322 mm (41.7 x 9.6 x 12.7 in.)	920 x 210 x 302 mm (36.2 x 8.3 x 11.9 in.)	870 x 180 x 272 mm (34.3 x 7.1 x 10.7 in.)	355 x 210 x 302 mm (14.0 x 8.3 x 11.9 in.)
Dimensions with plinth (H x W x D)	1107 x 359 x 322 mm (43.6 x 14.1 x 12.7 in.)	967 x 325 x 312 mm (38.1 x 12.8 x 12.3 in.)	917 x 295 x 312 mm (36.1 x 11.6 x 12.3 in.)	N/A



English Cherry.



Black Oak.



European Walnut.



Q100	Q600c	Q200c	Q800ds	Q400b
Two-way bass reflex	Three-way bass reflex	Three-way bass reflex	Three-way dipole	Closed-box subwoofer
130mm (5.25in.) aluminium Uni-Q 25mm (1in.) vented aluminium dome HF	165mm (6.5in.) aluminium Uni-Q 25mm (1in.) vented aluminium dome HF 165mm (6.5in.) aluminium LF 165mm (6.5in.) aluminium ABR	130mm (5.25in.) aluminium Uni-Q 25mm (1in.) vented aluminium dome HF 130mm (5.25in.) aluminium LF 130mm (5.25in.) aluminium ABR	2 x 130mm (5.25in.) aluminium Uni-Q 2 x 25mm (1in.) vented aluminium dome HF	1 x 250mm (10in.)
49Hz - 40kHz	45Hz - 40kHz	50Hz - 40kHz	100Hz - 40kHz	28Hz - 140Hz
2.5kHz	500Hz, 2.5kHz	500Hz, 2.8kHz	300Hz, 2.5kHz	N/A
N/A	N/A	N/A	N/A	200W built-in Class-D
10 - 100W	15 - 150W	15 - 130W	10 - 100W	N/A
86dB	87dB	85dB	85dB	N/A
107dB	110dB	108dB	107dB	110dB
8Ω	8Ω	8Ω	8Ω	N/A
N/A	N/A	N/A	N/A	40Hz - 140Hz, 4th-order
N/A	N/A	N/A	N/A	RCA phono sockets
N/A	N/A	N/A	N/A	23.2 litres
N/A	N/A	N/A	N/A	100 - 240V ac ~ 50/60Hz
N/A	N/A	N/A	N/A	200VA
5.9kg (13.0lbs)	14.1kg (31.1lbs)	11.0kg (24.3lbs)	7.4kg (16.3lbs)	13.6kg (29.9lbs)
300 x 180 x 272 mm (11.8 x 7.1 x 10.7 in.)	210 x 629 x 302 mm (8.3 x 24.8 x 11.9 in.)	180 x 525 x 260 mm (7.1 x 20.7 x 10.2 in.)	180 x 348 x 180 mm (7.1 x 13.7 x 7.1 in.)	335 x 330 x 330 mm (13.2 x 13.0 x 13.0 in.)
N/A	N/A	N/A	N/A	N/A



[www.kef.com](http://www.kef.com)

United Kingdom  
GP Acoustics (UK) Limited  
Eccleston Road, Tovil, Maidstone,  
Kent, ME15 6QP U.K.  
Telephone: + 44 (0) 1622 672261  
Fax: + 44 (0) 1622 750653  
Email: [info@kef.com](mailto:info@kef.com)

China  
GP Acoustics (China) Limited  
Unit 4910, Diwang Commercial Centre,  
Shenzhen, China 518008.  
Telephone: +86 (755) 8246 0746  
Fax: +86 (755) 8246 0125  
Email: [info.prc@gpe-hkg.com](mailto:info.prc@gpe-hkg.com)

Europe (EMEA)  
GP Acoustics GmbH  
Am Brambusch 22, 44536, Lünen,  
Deutschland.  
Telephone: +49 (0) 231 9860-320  
Fax: +49 (0) 231 9860-330  
Email: [sales@gpaeu.com](mailto:sales@gpaeu.com)

France  
GP Acoustics (France) SAS  
39 Rue des Granges Galand - BP60414,  
37554 Saint Avertin CEDEX, France.  
Telephone: +33 (0) 2 47 80 49 01  
Fax: +33 (0) 2 47 27 89 64  
Email: [info.france@kef.com](mailto:info.france@kef.com)

Hong Kong  
GP Acoustics (HK) Limited  
6F, Gold Peak Building,  
30 Kwai Wing Road, Kwai Chung,  
N.T., Hong Kong.  
Telephone: +852 2410 8188  
Fax: +852 2401 0754  
Email: [info@gpacoustics.com.hk](mailto:info@gpacoustics.com.hk)

Japan  
KEF JAPAN, 1-11-17, Honcho, Koganei-city,  
Tokyo, Japan. 184-0004.  
Telephone: +81 (0) 42-388-2030  
E-mail: [info@kef.jp](mailto:info@kef.jp)

USA  
GP Acoustics (US) Inc.,  
10 Timber Lane, Marlboro,  
New Jersey 07746 U.S.A.  
Telephone: +1 (732) 683 2356  
Fax: +1 (732) 683 2358  
Email: [sales@kefamerica.com](mailto:sales@kefamerica.com)

KEF and Uni-Q are registered trademarks. Uni-Q and other KEF technologies are protected by worldwide patents. All text and image copyrights reserved. KEF reserves the right, in line with continuing research and development, to amend or change specifications. E&OE.